

PressurizeIT

Leak Testing Instrument S9 Lite



Specialist in leak testing since 1973



- Leak Testing -

Nolek's range of leak testing instruments has in the beginning of 2009 been extended with one additional instrument called; **PressurizeIT S9 Lite**. It has been launched to fill an important gap between the instruments PressurizeIT S9 and the PressurizeIT TS 500. The S9 Lite is a "simplified" version of the S9, used for more simple measurements especially when customers have few products they want to test with a high accuracy. The S9 Lite gives the customers their money's worth;



- Extreme accuracy
- Easy to use
- Unmet quality standards
- Markets most modern leak testing instrument
- Low cost option

Nolek can recommend which instrument is best for each application. As a general overview; if a customer wants the below features they should rather look at the S9. These features are not necessary for all customers and is what enables the low price of the S9 Lite.

- Fixture control capabilities
- Ethernet communication
- Possibility to test at different pressures in one test through the electronic regulator
- Multi-circuit system
- Combination instrument (e.g. Vacuum and Overpressure)
- Other pressure ranges than normal (Low, High, Extra High)
- Split display (Display close to operator, instrument close to object)
- Start-box with Start, Reset and thumbwheel switch
- Volume dosing
- Time dosing
- shock filling

Why invest in S9 Lite leak testing?

- **Time saving:** quicker and drier than submerging under water
- **Cost saving** through less rework as one will directly know after a test if the product is tight/working.
- **Quality argument**, one knows that the delivered products are tested and that they have a good quality.
- **Environmental argument**, products do not leak, e.g. oil, out in the nature. Also that the products work directly and do not have to be transported back and forward between customer and supplier.
- **Sales argument** for a company that leak test, as they can guarantee the tightness of their products, which is quality rewarding. Furthermore, it lets one argue for less impact on the environment.



Argument 1:
Low price with high quality

Argument 2:
High reliability

Argument 3:
Nice design

Examples of applications for the S9 Lite:

- Automotive
- Air Condition
- Electronics
- Medicine and Pharmaceuticals
- Heat Exchangers
- Hydraulic and Pneumatic
- Casting
- Water armature and pumps
- Packaging
- Machine builders

Selection of Display Options



The following options are available:

- Graphical display
- Combo (Numerical and Graphical display)
- Numerical display with large characters for an easy to read display, even at a distance!

Text Field

Name your programs. This provides security and the assurance that the correct program/recipe is used.

Tower or Desk Format



Tower or Desk Format

Select according to your layout needs. They both have the large and easy-to-read display with a clear and practical menu system.

Optical Signals

The distinct green and red signal lamps displays all test results clearly.

Optional adjustable Calibration Leak

The calibration leak can be adjusted continuously and is well protected against unintentional adjustments (option).

Streamlining Functions and Properties

Argument 4:
Impressive technical performance

PC collection of test data

Perfect for when you need to analyze data.

Automatic Setting

The instrument creates its own standard setting.

Optional Additional Language

In addition to the standard languages Swedish, English and German you can connect to a PC and add two more languages of your choice.

Automatic Power supply Accommodation

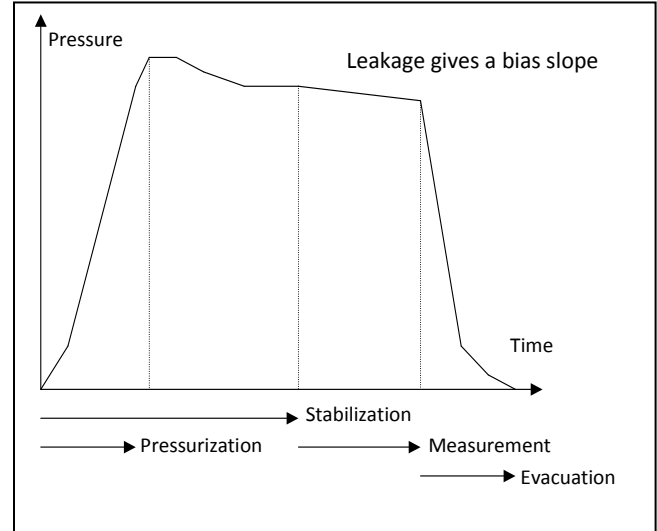
Simplifies transportation to other countries, 100 240V.

Leak testing is carried out using either differential pressure measurement with overpressure or vacuum, or through flow testing.

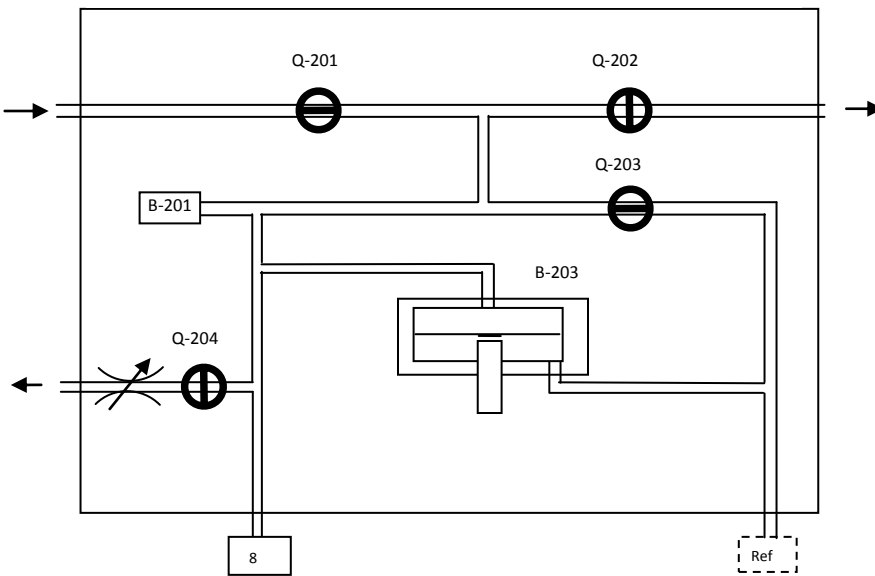
Facts about differential pressure measurement

With differential pressure measurement, systems are divided into two volumes, a test volume and a reference volume. These are pressurized to a uniform pressure. One volume contains the test object. When the pressure has equalized, the two volumes are separated by a valve and any pressure changes between them are measured with a differential pressure gauge. If the test object leaks, the pressure in the test volume changes.

A typical measurement cycle for differential pressure might look like the picture to the right. The stabilization time is the time it takes for the test volume and the reference volume to fill with air. This is followed by pressure equalization and then a measurement time during which pressure changes due to leakage in the test object are measured. Finally, the air is released from the test object.



Measurement sequence with Differential pressure meas. Pressurization, Stabilization, Measurement & Evacuation



1. Pressurization:
The evacuation valve “Q-202” closes and the entire piping system including test object and reference volume are filled to the specified test pressure. The pressurization valve “Q-201” remains open until pressure sensor B1 registers the correct test pressure P. The pressurization valve then closes and the stabilization time starts.

2. Stabilization:
Pressure equalization now takes place so that the pressure and temperature in the test object and the reference volume are the same when measurement begins. At the end of the stabilization time, the stabilization valve “Q-203” closes and the measurement time begins.

3. Measurement:
If the test object leaks, differential pressure sensor “B-203” registers a pressure difference between the test object at port 8 and the reference volume. If the pressure difference becomes too great within the programmed measurement time, a leak signal is given and the test is aborted.

4. Evacuation:
The test pressure is evacuated.

Function check (Q-204):
For checking that the equipment is correctly adjusted and that it registers the specified leak levels. The reference leak valve is adjusted using a Calibration instrument, recommended is Noleks CalibrateIT C9.

The reference leak valve can be controlled manually or automatically, e.g. once per day.



Facts about flow measurement

The instrument measures the amount of air that is added at a potential leakage in the tested object. This makes it possible to show the exact leak rate on the display continuously. It is used e.g. at volume variations between tested objects. Calibration is carried out by the build in reference leak that can be adjusted to the correct leak rate.

1. Pressurization

The evacuation valve Q-202 is closed, the pressurization valve Q-201 is opened. The test pressure is read with B-201, when the right test pressure is reached the flow valve Q-208 is opened, to speed up the stabilization the flow valve and the pressurization valve are both open.

2. Stabilization

If the test pressure falls more than 5% of the decided leak rate a signal for gross leak is given. During the stabilization one can read the flow signal continuously.

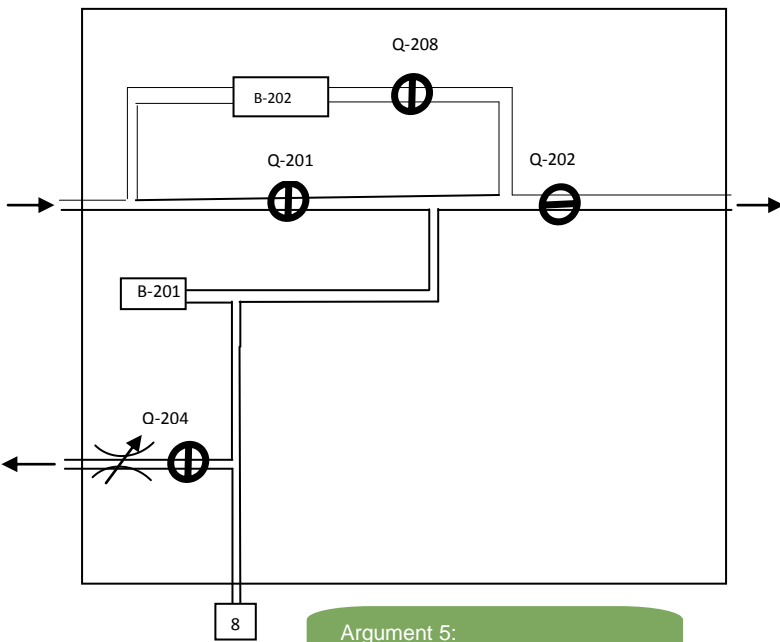
3. Measurement

One can now read the flow value from B-202. Also the flow signal against the leak rate. If the flow is higher than the leak rate a red signal is shown and the test is cancelled. If the flow is not higher than the leak rate a green signal is shown and the test object is evacuated.

4. Evacuation

Flow valve Q-208 is closed and the evacuation valve is opened.

Measurement sequence with Flow meas.
Pressurization, Stabilization, Measurement & Evacuation



Argument 5:
Small and compact instrument

Time Saving Functions

QuickStop

Reduced measuring time with the help of a new technique! Reduces the measuring time to approximately 1/4 of the original time using an advanced calculation of the leak development.

ZeroOffset

Compensate during external interference! This function can offer extremely short cycles without affecting the test value negatively.

Argument 6:
Strong brand, specialist in leak testing since 1973.

Argument 7:
User-friendly with a easy-to-use meny.

Argument 8:
100 test programs.

The **Factory options** are important to order together with the instrument. Some options are possible to add afterwards but not all. The **Aftermarket accessories** are options that are possible to add at any time, before or after an order. When ordering the **Factory options** you just add the letter indicated to each option below after the instrument article number e.g. S9-T-...-ADG. The **Aftermarket accessories** options will follow later in the document.

Below is a description of the different options, answering three questions about each option: What is it? When is it required? And How to you use it? Please do not hesitate to ask if you need any further clarifications.

A. INLET REGULATOR WITH FILTER

For high pressure



Placed here →



For low/normal pressure



What is it?

The regulator determines that the instrument obtains a stable pressure. On the regulator a filter is placed to protect the instrument from unwanted pollution from the inlet air.

When is it required?

This option is always necessary on Flow instruments when there is no external regulator to control that the pressure is stable. This is also always necessary when you have a vacuum ejector. Finally this is also necessary when the pressure in the supplied air exceeds 7 bars.

How to use it?

This is mounted externally on port 1 on the backside of the instrument. The regulator must always be regulated to a minimum of 5 bar and always 1 bar over the final test pressure.

B. BUILT IN WHEEL-ADJUSTABLE CONTROL LEAK



What is it?

This is adjustable leak used for calibration of the instrument. It is easy to adjust with the wheel.

When is it required?

It is recommended when there is no other control leak. Without a control leak, it is not possible to set a leak rate with a differential pressure instrument. With this option it is possible to use the S9's Auto control function.

How to use it?

The external control leak must be adjusted with the calibration instrument CalibratIT C9. A separate manual for the C9 is available.

C. AMS9-142 SCREW ADJUSTABLE CONTROL LEAK



What is it?

This adjustable control leak is similar to "Built in wheel-adjustable control leak", but can only be adjusted with a screwdriver.

When is it required?

Compared to "Built in wheel-adjustable control leak", this is used when there is a risk of that the control leak would be adjusted by mistake by moving the wheel. With this option it is also possible to use Auto control.

How to use it?

The external control leak must be adjusted with the calibration instrument C9. A separate manual is available.

D. EXTERNAL EVACUATION PREPARATION



What is it?

A port (port 9) on the instrument is connected to the evacuation valve in order to be able to connect an external evacuation.

When is it required?

When one want to use external evacuation.

How to use it?

You control an external evacuation valve through port 9. Hence, this is a preparation for external evacuation explained further below.

E. KIT EXTERNAL EVACUATION VALVE INCL. FILTER



What is it?

This kit contains a valve with a filter to prevent pollution from getting inside the valve.

When is it required?

When test objects contain pollution this kit reduces wear and service cost of the instrument. . If you have small objects with a low leak rate, filters should not be used (min 2dl volume at 10mm³/s).

How to use it?

The kit is mounted on the back of the instrument which has to be prepared for external evacuation (see above). The external evacuation is ready to be used at delivery.

F. CHANGE OF FLOW RANGE



What is it?

The standard flow range 60ml/min (1000 mm³/s) can be changed to the following flow ranges depending on instrument type: Low & Normal: 200 or 1000 ml/min (3333 or 16666 mm³/s).

When is it required?

If you have a flow instrument and need a different flow range than the standard 60ml/min (0-1000 mm³/s).

How to use it?

The new flow range is used without any change in settings or other requirements.

G. VACUUM EJECTOR



What is it?

This is a small vacuum pump directly mounted on the instrument with maximum vacuum of -93kPa. There is also an extra valve inside the instrument that controls air to port 5.

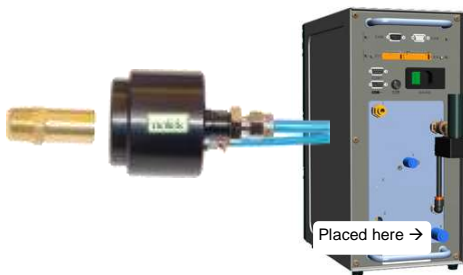
When is it required?

This is necessary with a vacuum inst, if you do not have an external vacuum pump. With bigger volumes or/and when higher pumping capacity is required, we recommend to purchase a vacuum pump from Nolek instead.

How to use it?

It is directly mounted on the backside of the instrument, port 5 is air outlet with a restrictor to control the vacuum in small volumes. Port 3 is the vacuum port. A prerequisite is to have the option vacuum measurement function. One cannot have both an external vacuum pump and a vacuum ejector.

H. QUICK CONNECTOR OUTLET PREPARATION



What is it?

There is an extra valve in the instrument connected to port 7 that adds the possibility to control a connected quick connector. You also have the possibility to control other functions on a fixture.

When is it required?

If the instrument has a quick connector connected that should be activated by the instrument.

How to use it?

When this is prepared you just have to connect a quick connector to port 7 on the backside of the instrument.

I. CALIBRATION PROTOCOL.



What is it?

The instrument is calibrated to assure measurement accuracy. A protocol is also produced and sent to customer together with the calibrated instrument.

When is it required?

When one want to assure measurement accuracy and have a written document for traceability reasons.

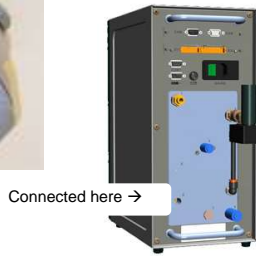
How to use it?

The protocol is shipped together with the instrument.

The **Aftermarket accessories** can both be ordered at the time of instrument order, but can also be ordered after a purchase has been made.

Below is a description of the different options, answering three questions about each option: What is it? When it is required? and How to use it? Please do not hesitate to ask if you need any further clarifications.

1. TEST PORT FILTER



What is it?

This is a filter to protect the instrument from pollution coming from the test object. The filter house has a length of 45mm and a diameter of 70 mm. The filter insert has specification 77 my.

When is it required?

When test objects are dirty or if there is a risk they may be dirty, this filter maintains the performance of the instrument. Note that Nolek's S9 warranty does not cover faults caused by dirt if filter is not used.

How to use it?

The filter is directly connected to port 8 and independent from airflow direction. This filter will decrease the sensitivity because it increases the volume. If you have small objects with a low leak rate, filters should not be used (min 2dl volume at 10mm³/s).

2. FILTER INSERT

What is it?

This is the filter that is inserted in the test port filter. Come in five-packs.

When is it required?

The test port filter has to be replaced when it becomes too full. Change intervals depend on application and use.

How to use it?

The Test port filter is easily disassembled without removing the hoses and connections. Then it is just to change the filter.

3. DATA COLLECTION SOFTWARE



What is it?

This software enables the user to store test data, export it to Microsoft Access and/or Excel, where they can view it, print it or save it.

When is it required?

When the user wants to store data.

How to use it?

See separate manual. Only available in English.

4. TESTIT DATA COLLECTION SOFTWARE



What is it?

This software enables the user to store test data, export it to Microsoft Access and/or Excel where they can view it, print it or save it. The software is required when using a barcode reader, otherwise option above is recom.

When is it required?

When the user wants to store data and use a barcode reader.

How to use it?

See separate manual. Only available in English.

5. REMOTE CONTROL BOX, WITH START AND RESET



What is it?

This is an external remote control box for start and reset.

When is it required?

When user wants to start and reset the instrument externally, perhaps at a more ergonomic placement for the user. The box can be placed up to two meters from the instrument.

How to use it?

Connect the control box with the included cable to port x (see pic left). It is then ready to be used.

6. EXTERNAL CONTROL LEAK



What is it?

This is a control leak that is connected to the front of the instrument.

When is it required?

It is necessary to add an external reference leak when there is no built-in control leak. It is recommended to have in all cases when one does not have any other reference leak, to be sure that one measure correctly. It is possible to use one control leak for several instruments. With this option it is not possible to use Auto control (as with internal control leaks).

How to use it?

It is mounted directly on the front connector of the instrument. Then it is adjusted to a correct leak rate by connecting it to a C9 calibration unit. Separate manual is available.

7. INLET REGULATOR WITH FILTER

For high pressure



For low/normal pressure



What is it?

The regulator determines that the instrument obtains a stable pressure. On the regulator a filter is placed to protect the instrument from unwanted pollution from the inlet air.

When is it required?

This is always necessary on Flow instruments when there is no external regulator to control that the pressure is stable. This is also always necessary when you have a vacuum ejector. Finally this is also necessary when the pressure in the supplied air exceeds 7 bars.

How to use it?

This is mounted externally on port 1 on the backside of the instrument. The regulator must always be regulated to a minimum of 5 bar and always 1 (one) bar over the final test pressure.

8. EXTRA CONTROL LEAK W/ MANUAL VALVE.



What is it?

This is an extra control leak with a manual valve. Standard is one extra control leak but up to 100 can be added upon request.

When is it required?

Used when there are two or more different leak limits. The different leak rates can be controlled without adjusting one control leak every time.

How to use it?

It is connected to the measurement port or the test object and controlled by a manual valve.

9. EXTRA CONTROL LEAK W/ ELECTRONIC VALVE



What is it?

This is an extra control leak controlled with electronic valve controlled by a separate PLC. Standard is one extra control leak but several can be added upon request.

When is it required?

Used when there are two or more different leak limits. The different leak rates can be controlled without adjusting one control leak every time. A PLC is required for this to work.

How to use it?

It is connected to the measurement port or the test object; it is controlled by the PLC.

10. START-UP KIT WITH TUBES AND CONNECTIONS



What is it?

This kit includes: a 2m long 8mm tube made especially for leak testing and two connections with 1/4 inch thread (BSP).

When is it required?

Recommended when one want to connect instrument to a test object.

How to use it?

First mount the connection on the hose (or mount them later). Then connect one connection to port 8 and the other to the test object.

12. INSTRUMENT TRAINING



What is it?

Training on the practical way of using the instrument.

When is it required?

Recommended to all first time users or as a refreshment.

How to use it?

Nolek offers a standard training course at the customer's location or at our facilities.

13. INSTALLATION



What is it?

Installation of the instrument and a possible fixture.

When is it required?

To all users who are not qualified to do this installation themselves.

How to use it?

A Nolek service technician will come half a day and install the instrument and fixture and show the basics on how it is used. This is not as extensive as the Instrument Training.

14. C9 – CALIBRATION UNIT



What is it?

Nolek C9 Calibration instrument.

When is it required?

For certainty that measurements are accurate. When you want to assure that you are measuring accurate. This is a prerequisite to have with a differential pressure instrument in order to calibrate it.

How to use it?

Separate manual available.

15. KIT EXTERNAL EVACUATION VALVE INCL. FILTER



What is it?

This kit contains a valve with a filter to reduce pollution going inside the instrument.

When is it required?

When test objects contain pollution this kit reduces wear and service cost of the instrument.

How to use it?

The kit is mounted on the back of the instrument which has to be prepared for external evacuation. The external evacuation is ready to be used at delivery.

16. CONNECTIT- QUICK CONNECTORS



What is it?

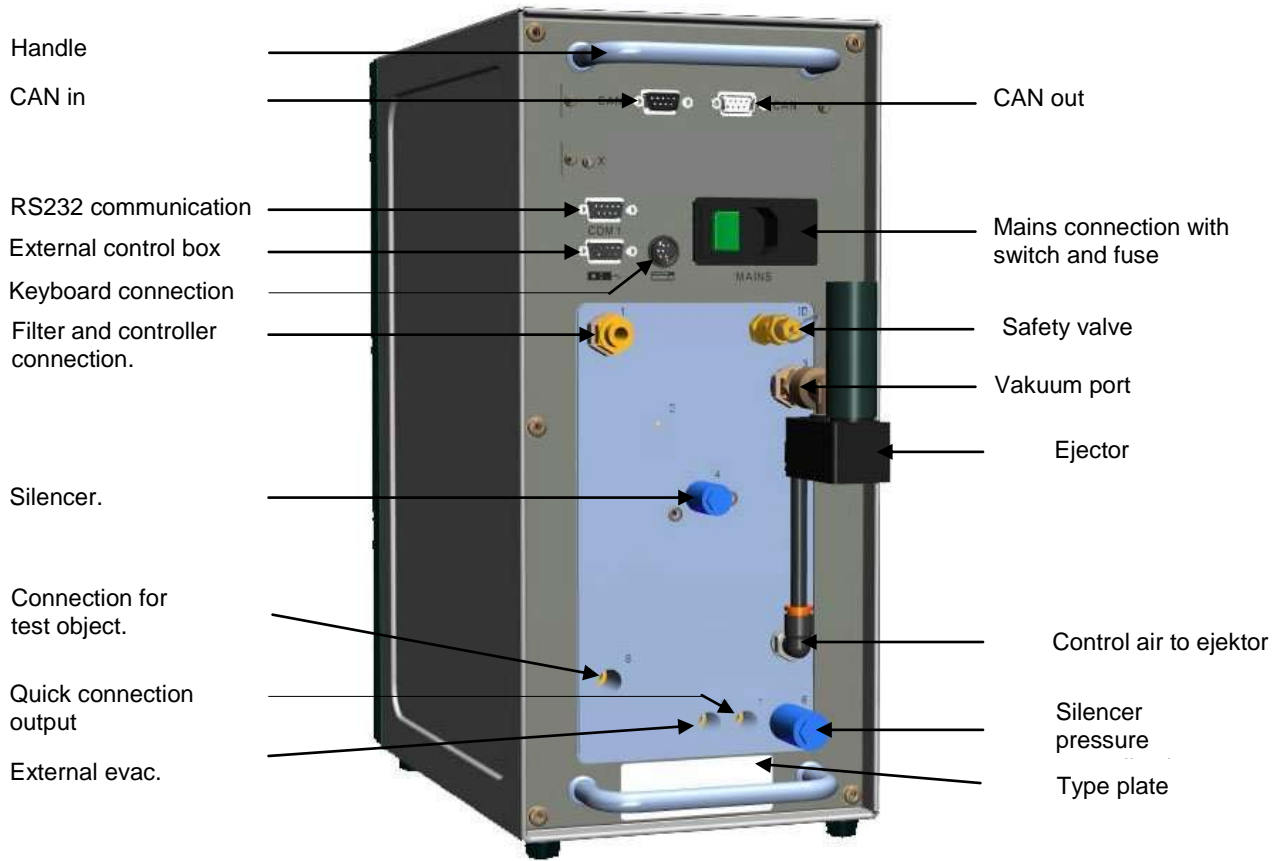
Nolek has developed tool solutions to rationalize temporary seals since 1973. We have a very large selection of quick connectors and fittings. Activation can be carried out manually or pneumatically. These products are gathered under the product group: ConnectIT.

When is it required?

When temporary sealing of test objects are necessary.

How to use it?

Activation can be carried out manually or pneumatically. See separate product information on www.nolek.com



Argument 9:
Short delivery times!

Dimensions and Data
Network connection:
 100-240 VAC / 0.9 A 50-60 Hz
Weight: Approx. 16 kg
Size: 188mm x 400mm x deep 315mm
Sealing grade: IP32
Color: Silver gray (RAL 6021) with a dark green front panel.
Designed for industrial use
CE - marked

Standard editions
3 Standard editions:
Diff/Vacuum: -1 to 0 bar
Diff/Overpressure: 0.2 to 5 bar
Flow/Overpressure: 0.2 to 5 bar
 (0-1000 mm3/s)

Sweden (Corporate Headquarters)
Nolek AB
 Hantverkavägen 11
 145 63 Norsborg
 Sweden
 Phone: +46 8 531 942 00
 Fax: +46 8 531 711 50
 E-mail: info@nolek.com
www.nolek.com

Malaysia (Asian Regional office)
Nolek- Renorex Asia
 6, Jalan Kampung Baru 08000
 Sungai Petani Kedah
 Malaysia
 Phone: +60 4 421 33 84
 Fax: +60 4 421 57 55
 E-mail: slchua@renorex.com.my
www.renorex.com.my

USA (North-American Regional office)
Nolek Inc
 P.O Box 204
 Plympton, MA 02367
 USA
 Phone: +1 781 585 5606
 Fax: +1 781 585 5606
 E-mail: nolekinc@nolek.com
www.nolek.com

APPLICATION EXAMPLES:

S9 Lite can be used for a great variety of leak tests in most application areas. These are some examples of different application areas and products that the S9 can be used for/in:

Automotive: Engine block, clutch, transmission/gear box, transmission/gear box houses, intake manifold, intake manifold gas channels, exhaust pipe, exhaust valve, clutch plate, cylinder head, retarder house, crank pit, valve body, valve housing cover, common rail systems, all types of bearing houses, retarder bearing house, cylinder blocks, fuel channel, fuel pipes, fuel tanks, radiator, brake cylinder, caliper, fuel systems, steering servo, size control, bedplate, pressure tank, tank coupling, water pump, clutch cover, pressure cap, air pipe, filler cap.

Packaging: test for closure and seal integrity of packages for example: sterile products, ink cartridges and perishables that can be negatively affected by oxygen and/or moisture.

Medicine and Pharmaceuticals: Blister packages, medicine bottles, medicine cans, sachets, and plasma bags etc

Air Condition: Test several components, including: different types of valves, including: control valves, adjustment valves, ball valves, vacuum valves, hydraulic valves, temperature regulator valves, and tools, bellows, thermostats, different types of filters, and different types of piping.

Electronics: Test for example: different types of electronic parts and devices, different types of batteries, different types of casings, cellular phones, casings for cellular phones, cellular phone antennas, alarm buttons, different types of lights, amplifiers, phones, optical sensors, com radios, ink containers, electric heaters, shavers, and weapon sights etc.

Hydraulic and Pneumatic: Test for example: different types of hydraulic and pneumatic components, valves, hydraulic motors, cylinders, all types of tubing, pipes and couplings, different types of water mixers, outboard drives, compressors, pressure tanks, bottle gas tanks, WC flushing mechanisms, and different types of jacks.

Casting: Test for example: different types of housing and covers, oil sumps, gear box houses, bearing box covers, clutch housing, range housing, engine blocks, coolers etc.



Argument 10:
Infinite backup

Argument 11:
Free user language

Argument 12:
1 year complete guarantee on the product

Argument 13:
Return on Investment is very high.

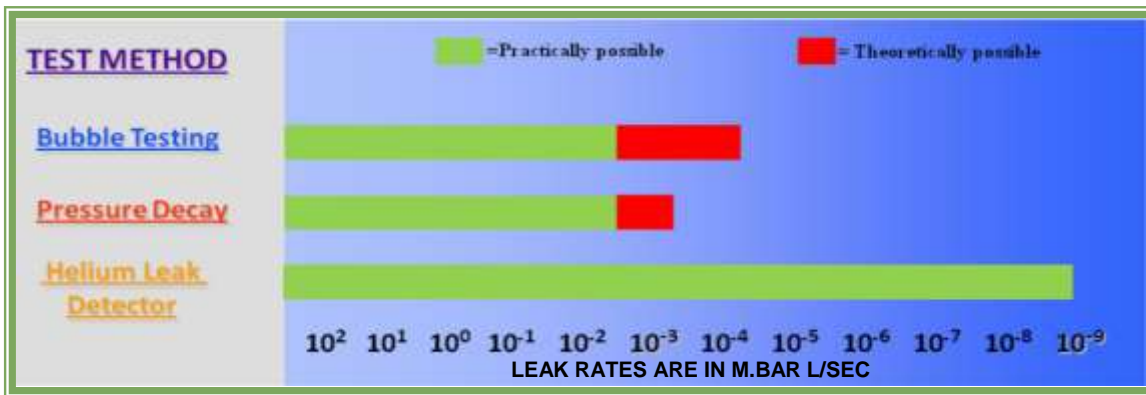


ENCLOSURE 1: COMPARISON B/W AIR & WATER TEST

INTRODUCTION

One of the first questions that usually arise when talking to customers with little or no previous experience of “professional leak testing” is why they should invest in a more expensive system when their cost effective bubble test is doing the work. The reasons are many and this document aims to give these persons an overview of the arguments for choosing “professional leak testing”, meaning pressure decay, instead of bubble testing. First we will show some **general** remarks and the **pros** and **cons** about the different methods and then add some **concluding** remarks including common misconceptions. Below is a table that shows the approximate leak detection rates with the different methods. Difference with practically being able to detect leaks and theoretically is described further below. This directly shows one common misconception; Air does not find smaller leaks than water, it is actually the opposite, but using water test is not a leak test, it is a way to locate leaks which is further described in the following pages. Helium leak detection is the most “sensitive” leak testing method; Nolek is also a specialist with Helium.

APPROXIMATE LEAK DETECTION RATES



General, Pros and Cons about “Bubble test” – Test using water

General

- The bubble method is an inside out method, where the part is first pressurized
- The part is then submerged down in water
- Soap solution can be added on the part for easier identification of bubbles
- This is only a leak search not a leak test

Pros

- Positive identification of the leak location(s)
- Cheap system

Cons

- Objects with smaller leaks than the leak rate are identified as “leaking = no good” and thrown away when it is not actually necessary.
- Objects with large leaks are missed and approved.
- Products are put in water, hence they become wet, it takes long time to dry.
- Total leak measurement is NOT possible
- Very operator dependent, impossible to focus and see all leaks when observing 8 hours a day.
- When lowering the object air is brought down, which makes it difficult to see if it is leaking or if it just the air that came with the lowering movement that show bubbles.
- No exact time specifications, some only dip the product in the water up and down, then a lot of leaks are missed as it takes time before some leaks to appear as bubbles.
- Water has a sealing effect on the object if not handled correctly.
- Sensitivity depends on fluid surface tension and on operator
- If water is not changed it could cause severe health issues on the operator
- Lowering objects in water can cause rust on objects
- If anti-rust agent is used it is not possible to paint the object directly after. The object must first be put in a washing machine and then it has to be dried before the paint can be put on.

ENCLOSURE 1: COMPARISON B/W AIR & WATER TEST

Pros and Cons about Pressure decay – Test using air

General

- A part is put under pressure/vacuum condition
- A pressure variation is observed over time
- The detected pressure variation is directly proportional to the leak rate
- This is a leak test not a leak location/identifying test

Pros

- Total leak measurement is possible
- Able to measure to a specified leak rate
- Able to conduct a real leak test hence a quality control
- Product is only tested with air, hence products stay dry
- Less products are thrown away, only the ones that have a larger leak than the specified leak rate will be identified as leaking.
- Tests are not operator dependent, rather instrument dependent.

Cons

- This system cost more than a bubble test
- The test cycle can be longer
- Not possible to find exact location of leak, hence a good combination is recommended

CONCLUSION

It is impossible to secure the level of quality with the water method. It is not a quality control it only works as a leak search and does not replace leak testing with air. That is not to say that the two methods cannot be combined:

- Use pressure decay to conduct a leak test and certify the quality of the product
- Use water to identify where the leak is located on the product

One does not actually measure more precise with air, one rather measure to the defined leak rate. With the water method it is not possible to define the rate at which it leaks and the most common mistake is that the operator believes that the product is leaking while in fact it is well above the rate at which it is classified to have a leak according to product specifications.

Products that are leaking when tested with pressure decay instruments sometimes are leaking when tested in water. The most common fault is that the product is not pressurized before it is lowered in the water and then all leaks will not be identified, especially smaller leaks. Hence, the issue of high dependence of operator arises, the operator has to conduct the test correctly at the same time as he has to be fully focused not to miss bubbles arising. Furthermore, he has to decide how many bubbles that decide if a product is leaking or not, a task which is as impossible as it sounds.

The leak rate; 10^{-4} mbar.l/sec is theoretically the lowest level where air bubbles are produced in water, below that level the air dissolves in the water without becoming bubbles. A lot of companies with leak rates under this level test products in water but will never see if the product is leaking at the specified level. For example some test gas pipes for air condition applications in water. These products often have a leak rate in the area of 10^{-6} mbar.l/sec which means that one is 2-3 decimals from being able to see if the product is leaking or not at the specified level.

The conclusion is that one need pressure decay to do a complete quality control on products. The initial investment might be higher but we help companies to leak test their products, leading to a:

- **Saving in cost**, being able to deliver to your customers PPM requirements.
- Increased **quality** of delivered products when leak testing in the correct way.
- Improved **environment** through less leakage and through less transports.
- Substantial **time reduction** compared to other leak test methods.
- Great **selling argument** when selling your product; the product is leak tested...